

IGRIS Advanced Scanning and Detection Technology





WHAT WILL IGRIS SCANNERS DETECT?

- Explosives; both liquids and solids
- Drugs
- Black Powder
- Nuclear and Radioactive material
- All organic substances such as tobacco, alcohol, soybean meal, corn, meat, coffee, sugar (and other food products), wood, ivory, minerals, currencies, etc.



DIFFERENCE BETWEEN X-RAY & IGRIS

	<u>X-RAY</u>	<u>IGRIS</u>
Scanning time required	2.5-3 min	10 sec
Scanning information produced	Produces images	Detects substances
Information Interpretation	Human interpretation	Computer interpretation,
Interpretation time	Up to 10 min	Instantaneous
Accuracy	Dependant on operators skills	99.99994%, detects exact location and volume
Skilled Labour required	Yes	No
Safety	Radiation shielding needed	No radiation shielding needed
Customized for the country	No	Yes
Size	Large footprint	Self-contained



RADIATION DOSE TO PERSONNEL

• ALLOWED LIMITS

- Personnel by 10 CFR 20.1601 and ANSI 7.1
 - Operators: 100 mrem/hour
 - Public: 2 mrem/hour
 - Drivers: 25 microrem/scan
- -----
- Cargo: Normal ambient activity 2 piCi/gm
- -----
- Containers: Surface level activity 10 μR/hr

• DOSE RECEIVED

- < 2 mrem/hr
- < 2 mrem/hr
- < 25 microrem/scan
- -----
- 0.02 piCi/gm
- -----
- < 3 μR/hr



ADVANCED WARNING SYSTEMS

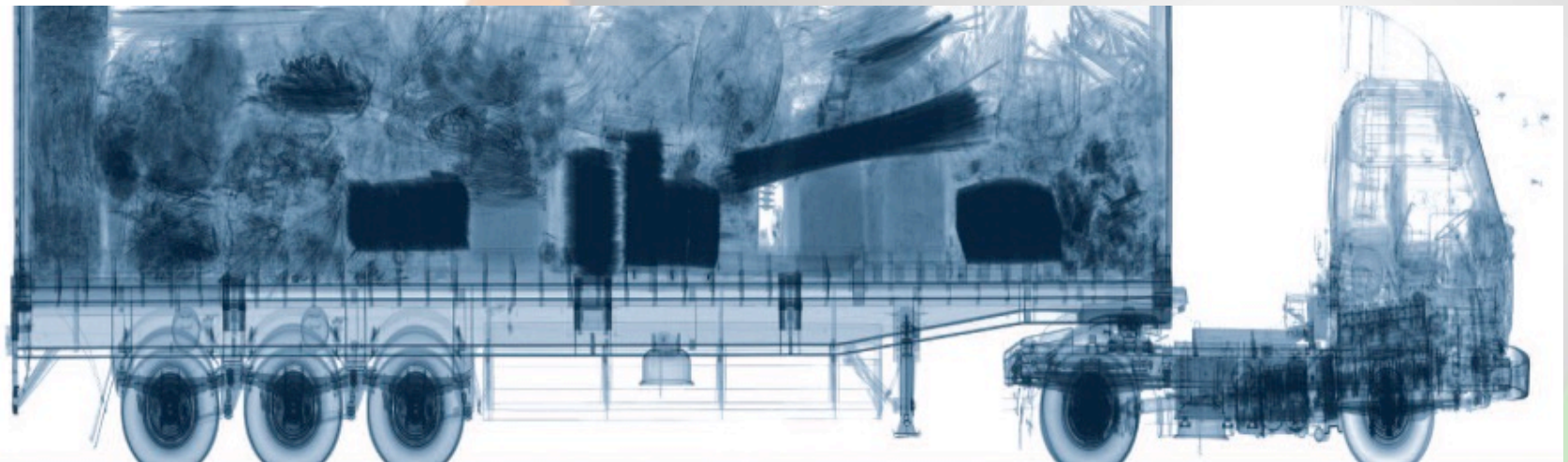


IGRIS
INELASTIC GAMMA RAY IMAGING



ScanTech
Global

X-RAY





ADVANCED WARNING SYSTEMS



MARITIME SCANNER





ADVANCED WARNING SYSTEMS



VEHICLE CHECKPOINT SCANNER





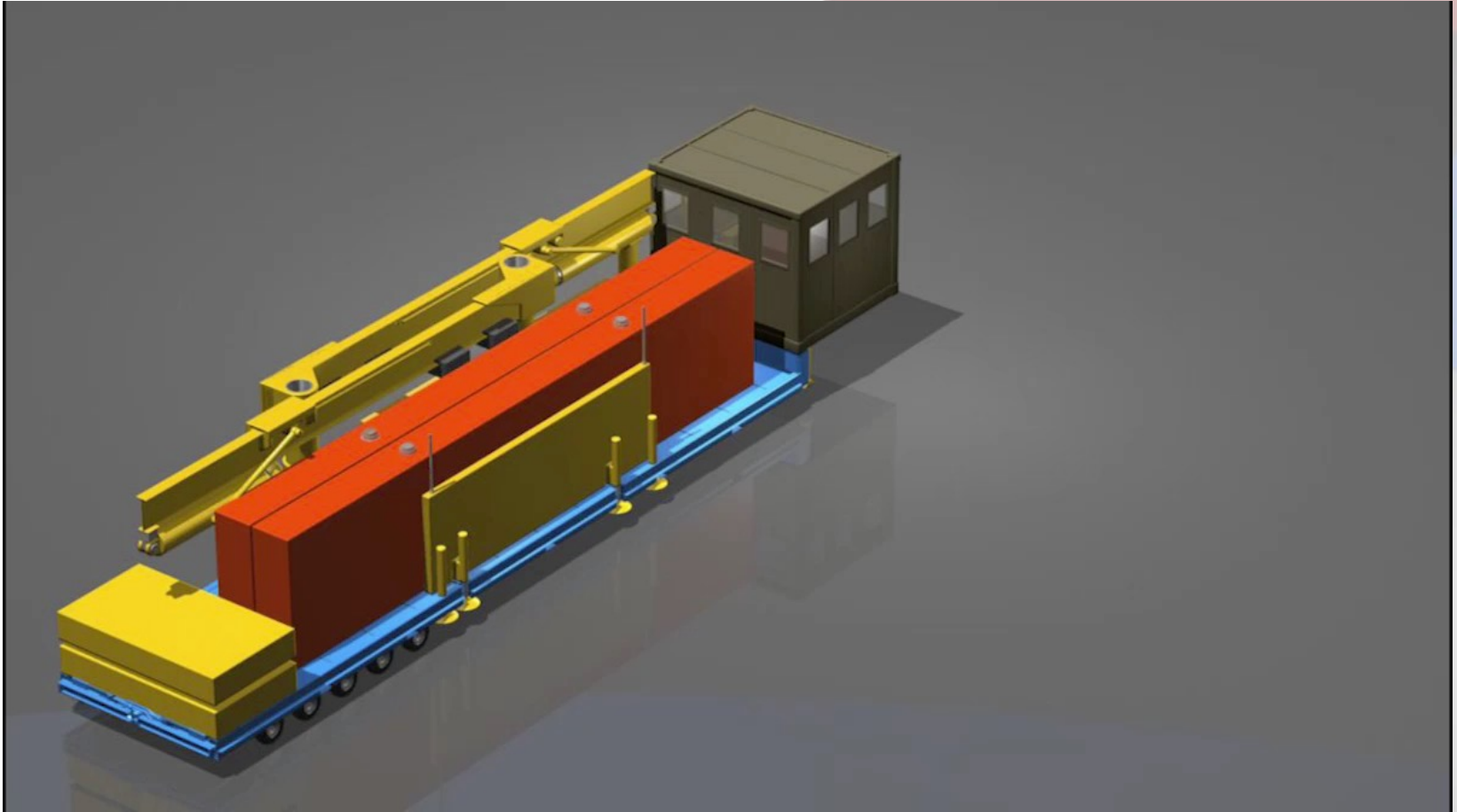
ADVANCED WARNING SYSTEMS

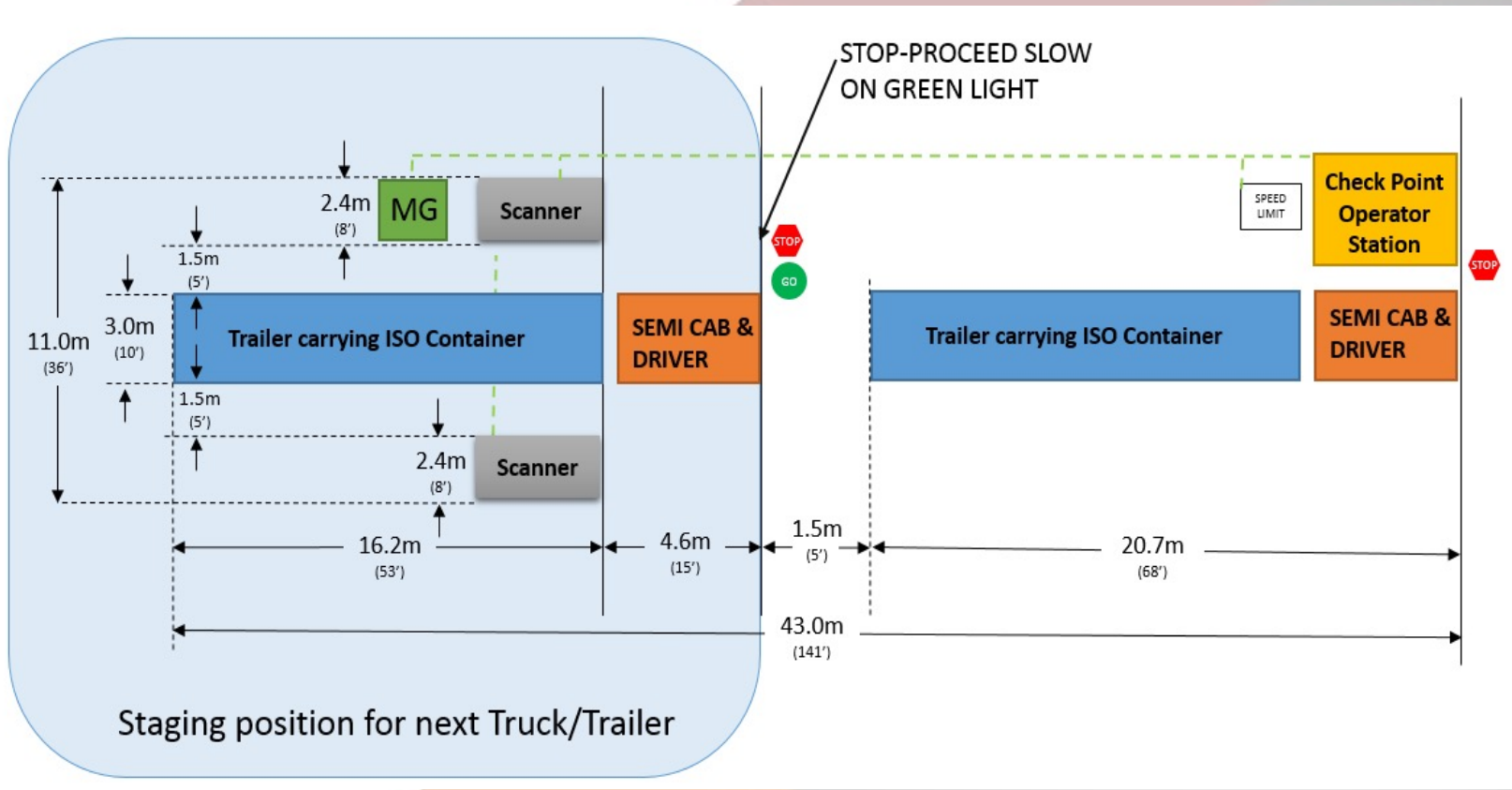


IGRIS
INELASTIC GAMMA RAY IMAGING



ScanTech
Global







SCANNING PROCESS

Your Country
Container ID# XXXXXXX
Truck ID# XXXXXXX

Not in position...




1 METER

4:35
Friday, May 17

Video Surveillance

Your Country
Container ID# XXXXXXX
Truck ID# XXXXXXX

Ready to scan



SCAN

4:35
Friday, May 17

Video Surveillance

Your Country
Container ID# XXXXXXX
Truck ID# XXXXXXX

Scanning...




SCAN

4:35
Friday, May 17

Video Surveillance

Your Country
Container ID# XXXXXXX
Truck ID# XXXXXXX

Scan complete




SCAN

4:35
Friday, May 17

Video Surveillance

Your Country
Container ID# XXXXXXX
Truck ID# XXXXXXX



4:35
Friday, May 17

Video Surveillance

Your Country
Container ID# XXXXXXX
Truck ID# XXXXXXX

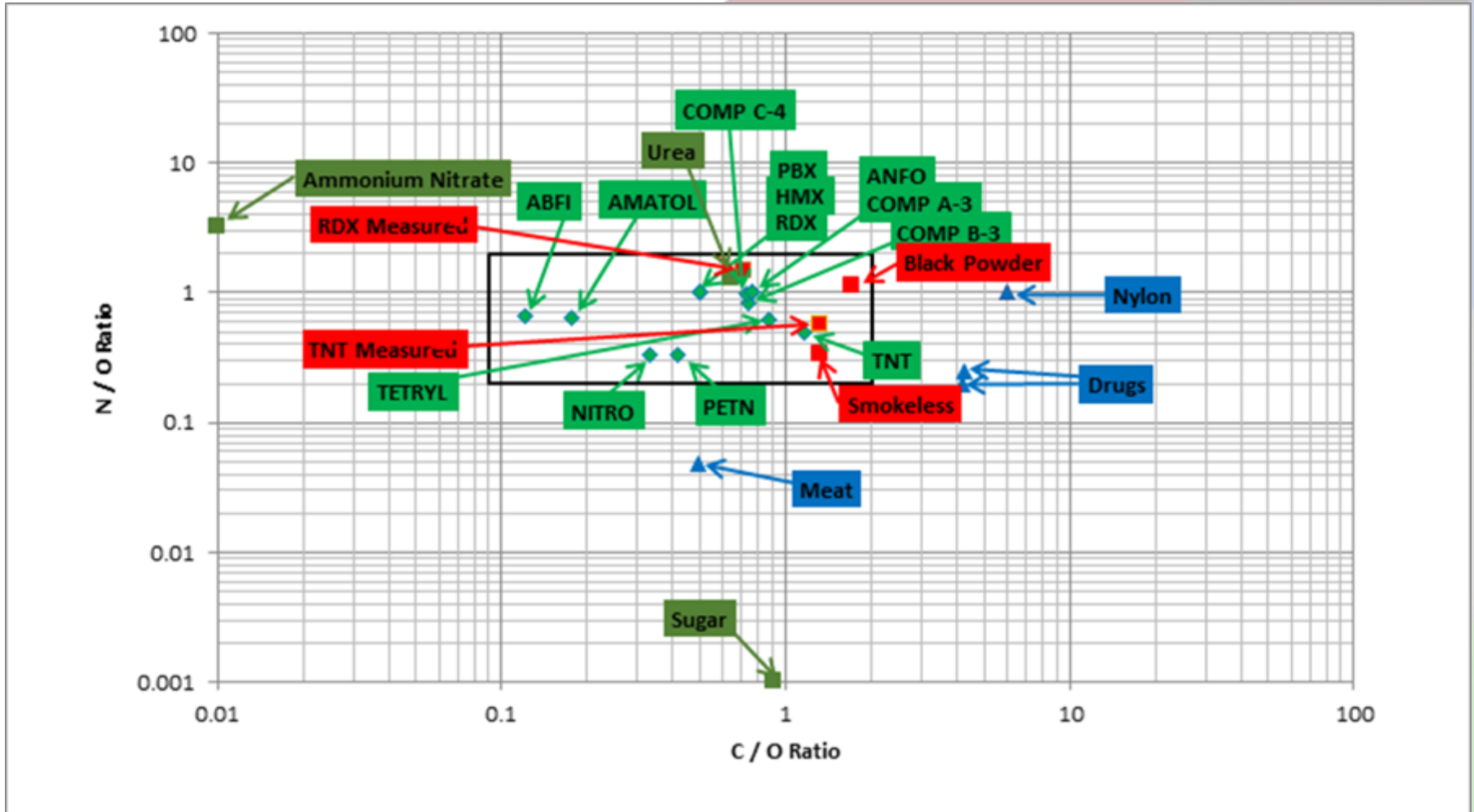


4:35
Friday, May 17

Video Surveillance



DETECTION OF SUBSTANCES





RESULTS

Your Country

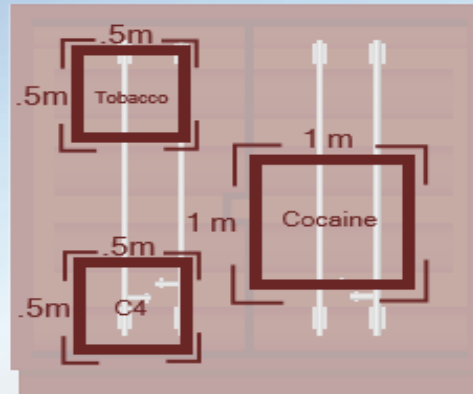
Container ID# XXXXXX
Truck ID# XXXXXX

REPORTED CARGO
65m³ Aluminum

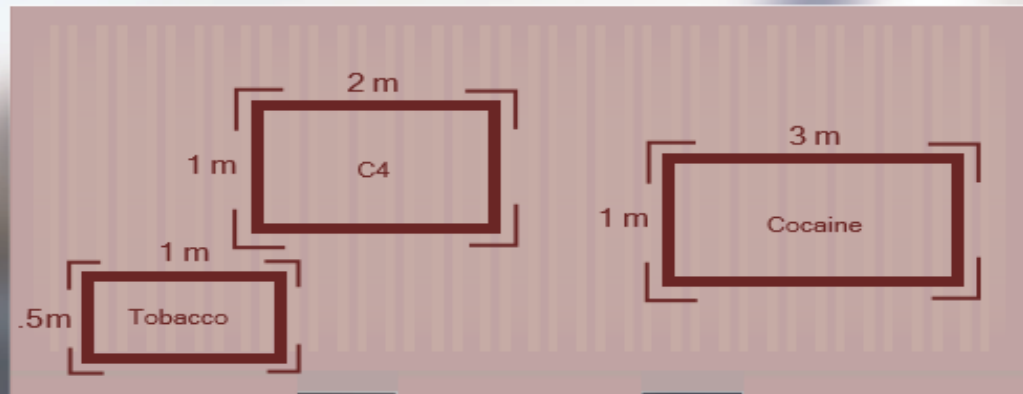
ACTUAL CARGO
1m³ C4 Explosives

ACTUAL CARGO
3m³ Cocaine

ACTUAL CARGO
.25m³ Tobacco



Video Surveillance





Questions we will ask you.....

- 1) Who operates the ports and airports?
- 2) If there is a concession, is the scanning included?
- 3) What is the present method of scanning containers?
- 4) Is there presently a scan-fee? If so, how much is it?
- 5) What is the total volume (import/export) of containers moving through each port and how is it divided between 20',40' full, empty and in transit?
- 6) What is the metric tonnage of Cargo going through the airports?
- 7) How many land borders are there and what is the volume of vehicles (cars/trucks) going through each one of them?



ADVANCED WARNING SYSTEMS



Contact Us Today

ScanTech Global

Level 19, 10 Eagle Street
Brisbane QLD 4000
Australia

T - +61 (0) 7 3112 8027

E - info@Scantech.global

W - www.scantech.global

ScanTech Global is a wholly owned subsidiary of Lincoln & Carlisle Pty Ltd



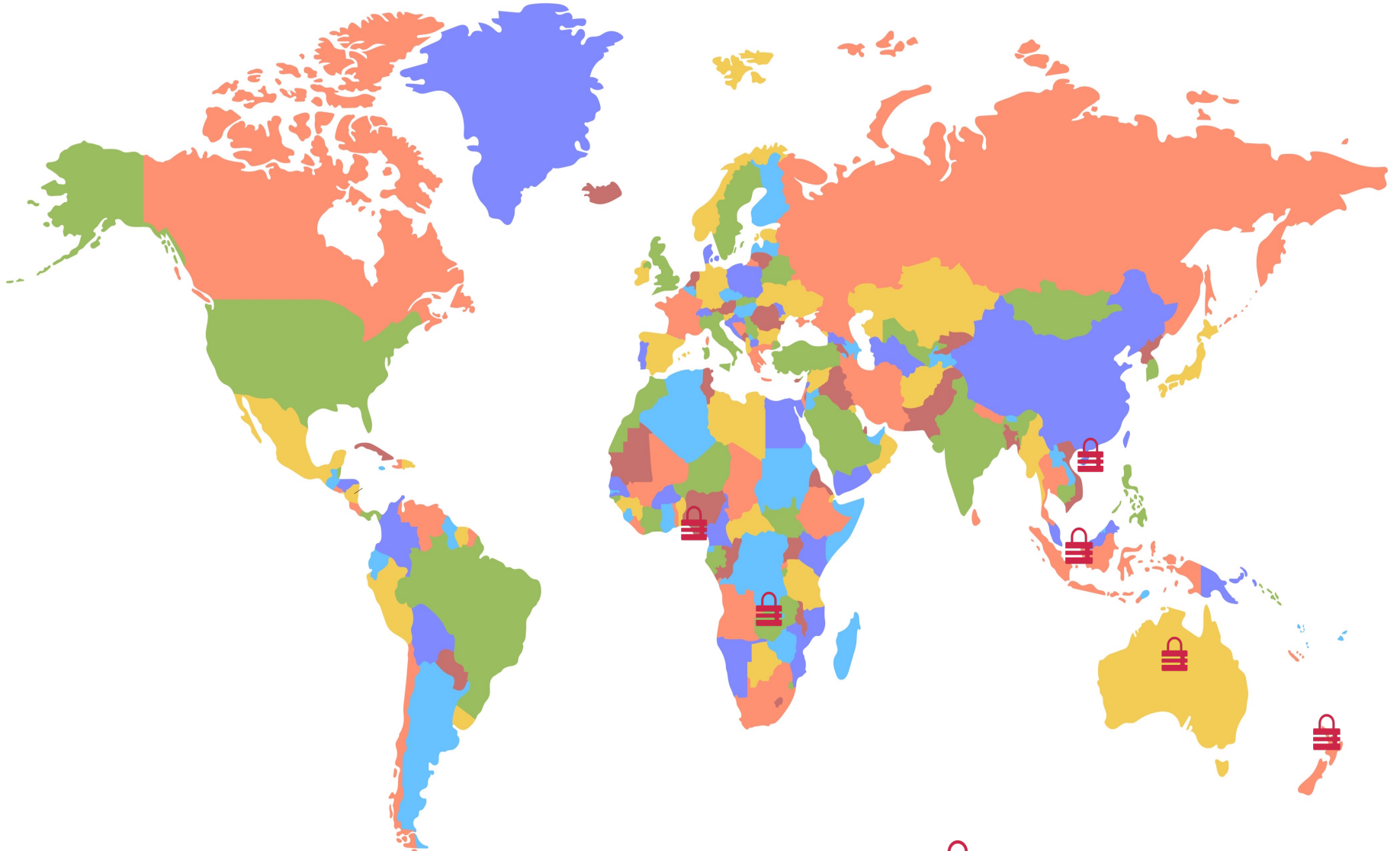
ADVANCED WARNING SYSTEMS



IGRIS
INELASTIC GAMMA RAY IMAGING



ScanTech
Global



ScanTech Global locations 